

The *All of Us* Research Program at MGH Chelsea HealthCare Center and Nationwide


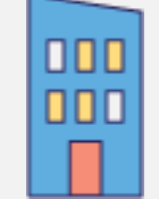



Meg Bor³, Maria Zahir³, Catherine Murphy³, Marcelo Binker¹, Md Kawser¹, Theophile Abel Mbaka Mouyeme¹, Dean C. Xerras¹, MD, Paul Nemeskal¹, MD, Karmel Choi¹, PhD, Natalie Boutin³, Alexandra Businger, MPH³, Alena Ganbold³, Christine Russo³, Leslie Waters³, Cheryl R. Clark², MD, ScD, Shawn N. Murphy¹, MD, PhD, Elizabeth W. Karlson², MD, MS, Jordan W. Smoller¹, MD, ScD
1. Massachusetts General Hospital; 2. Brigham and Women's Hospital; 3. MGB Personalized Medicine Department

What is the *All of Us* Research Program?

All of Us (AoU) is a research program that gathers health information from many people over a period of ten years, with the goal of increasing diversity in health research. Many kinds of data are collected, such as surveys about clinical risk factors and social determinants of health (SDOH). AoU also collects personal and family health history information, body measurements, such as height and weight, and blood and urine samples. People who are a part of the study are given new surveys and genetic information about their ancestry, health traits, and risk for diseases. Mass General Brigham (MGB) is an enrollment partner of *All of Us* New England (AoUNE) and the data collected comes from people from diverse backgrounds across the U.S. and at MGH Chelsea HealthCare Center (CHC).

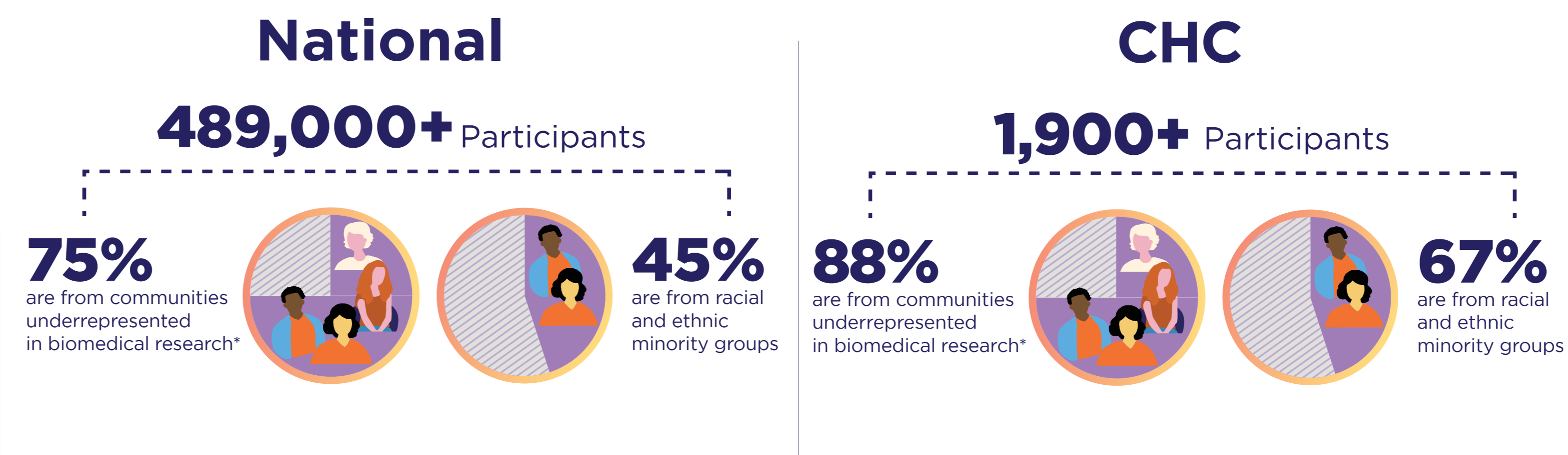
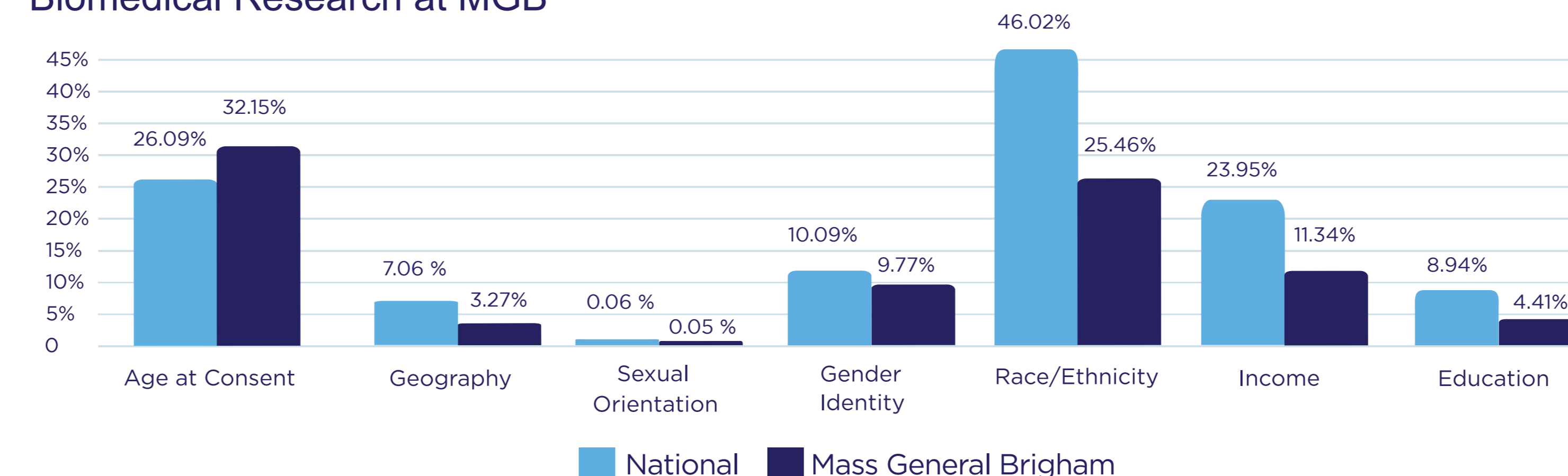
Program Engagement and Recruitment Methods

AoUNE aims to enroll 50K participants, with a target of at least 50% of participants coming from communities underrepresented in biomedical research (UBR). AoUNE uses a Community-Based Participatory Research (CBPR) approach to engaging and recruiting UBR populations.

 Phone calls	 In-hospital tabling
 Physician-sponsored letter invitations	 Community Advisory Panel
 Research invitations through Patient Gateway	 External community engagement partners
 Recontact of MGB Biobank participants	 Hyper-local marketing and advertising

Outcomes: Diverse Participant Cohort

Percentage of Core Participants from Communities Underrepresented in Biomedical Research at MGB



30+
Community Organization Partners

Data Available in the Researcher Workbench



Key Takeaways

- Future recruitment should continue to focus on expanding diversity to study many different health topics and make medical discoveries.
- Being the largest and most diverse health database in the world may allow health researchers across all disciplines to discover new health risks, protective factors, and conditions that have previously gone unnoticed in UBR populations.
- Continuing the CBPR model of engagement and recruitment is critical to providing a health research experience that benefits both participants and investigators alike.

Since 2018, AoUNE has partnered with more than 30 community organizations to broaden outreach to UBR communities, collect feedback and increase opportunities for enrollment. Local partners have included the Community Research Program at MGH Chelsea HealthCare Center, the Veronica Robles Cultural Center and The Neighborhood Developers.