

COVID-19 Vaccine: The key to ending the pandemic

Rebecca Saff, MD, PhD

Allergy Immunology Fellowship Program Director

Massachusetts General Hospital

February 2, 2021



MASSACHUSETTS
GENERAL HOSPITAL

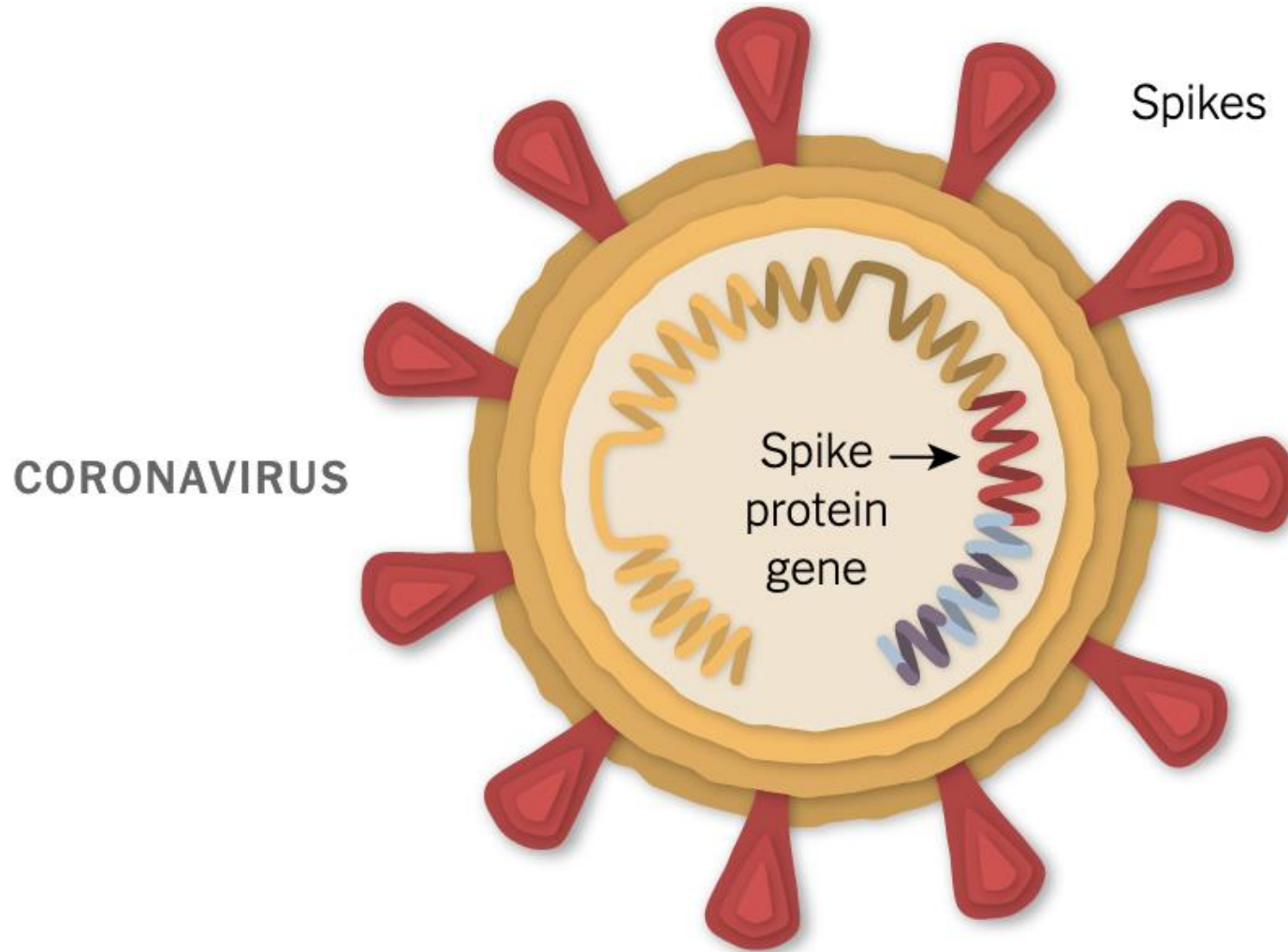
**Division of Rheumatology,
Allergy & Immunology**



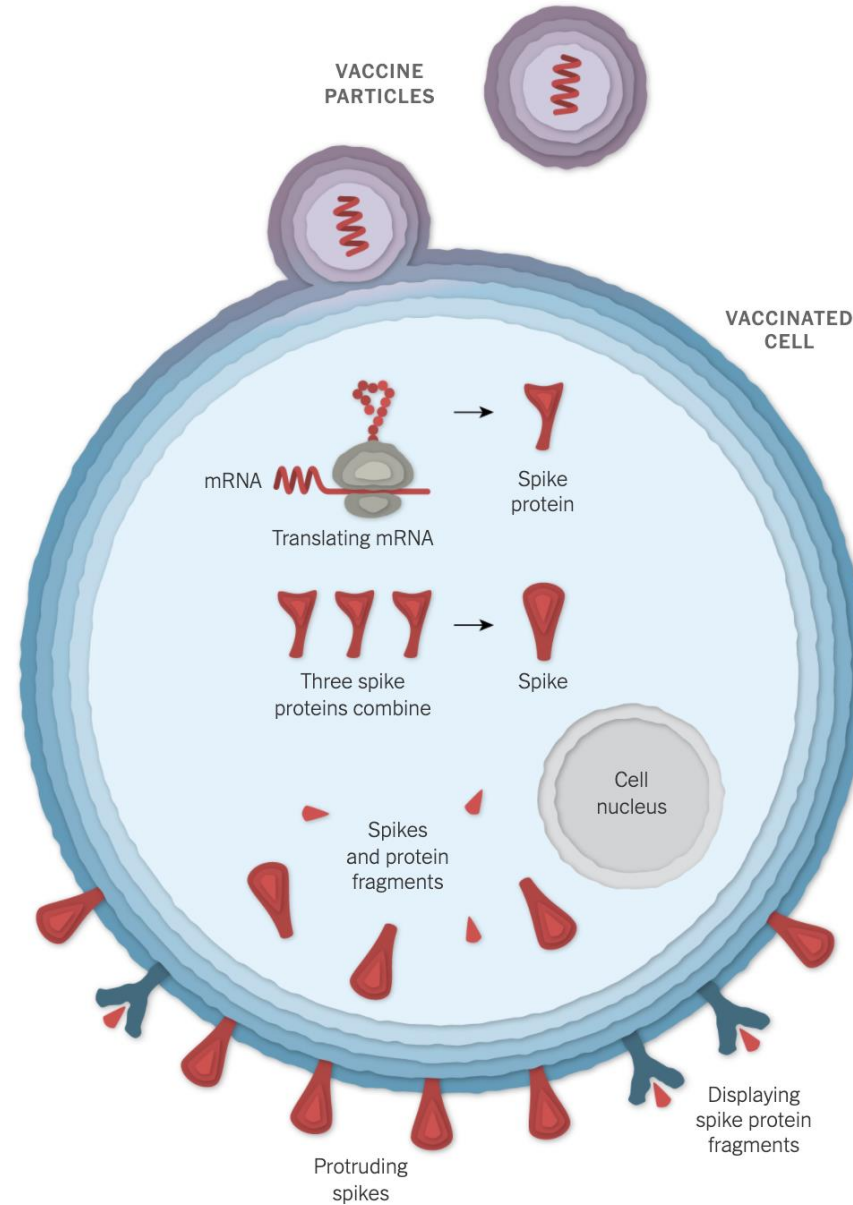
COVID-19 Vaccine



COVID-19 Vaccine



mRNA-based COVID-19 Vaccine

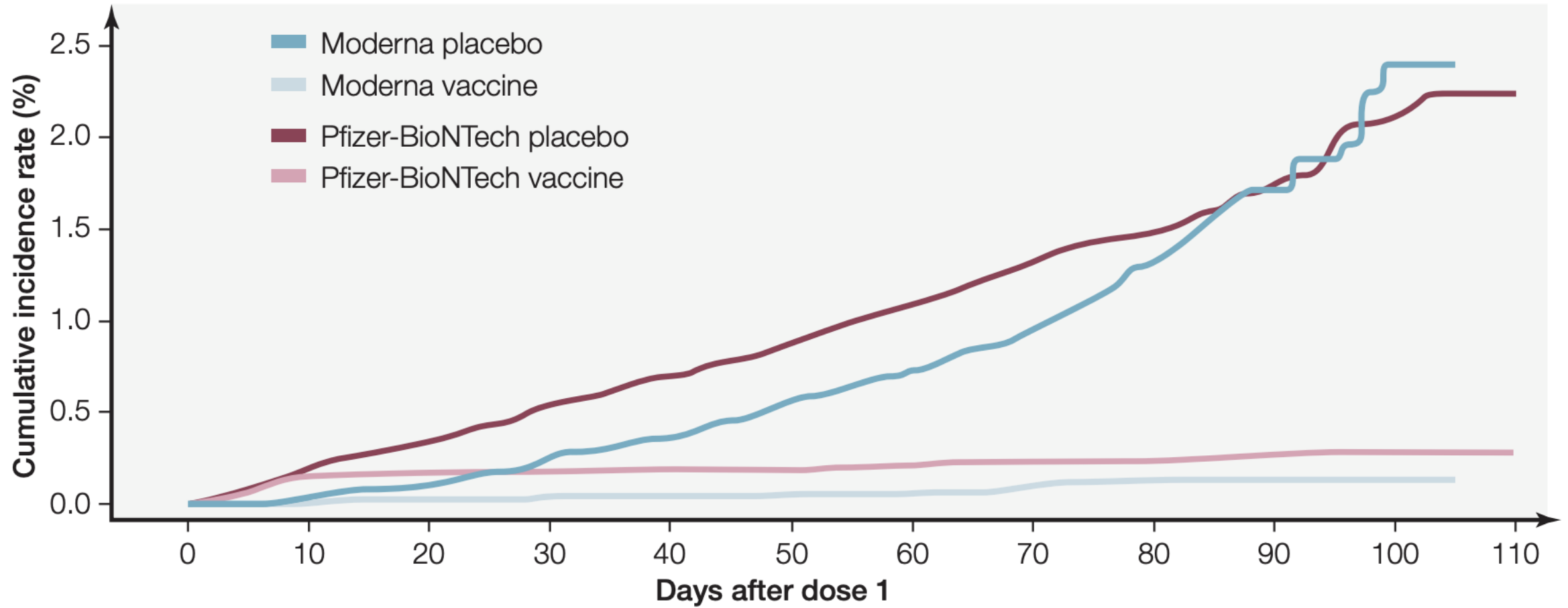


COVID-19 Vaccine

	Pfizer-BioNTech	Moderna
Micrograms of mRNA	30 micrograms	100 micrograms
Effectiveness	95%	94.1%
Inactive ingredients	PEG-2000	PEG-2000
Dosing Schedule	2 doses – 21 days apart	2 doses – 28 days apart
Storage	-70C	-20C
Side effects	Fatigue, fever	Fatigue, headache, muscle pain

COVID-19 Vaccine

Vaccine efficacy



COVID-19 Post-Vaccine Symptoms

What to Expect and When to Call

Reaction	Is this normal? What should I do?	When should I worry?	Can I get my second dose?
Fever, chills, muscle aches, fatigue, headache	Normal Can start within 24 hours and last for 2-3 days	May need COVID testing if high fever, symptoms last longer than 1-2 days, or symptoms that could be from COVID-19 (like a new sore throat, cough, nasal congestion, runny nose, loss of smell or taste, or shortness of breath)	YES

COVID-19 Post-Vaccine Symptoms

What to Expect and When to Call

Reaction	Is this normal? What should I do?	When should I worry?	Can I get my second dose?
Redness, swelling, and/or itching where you got the vaccine	Normal Can take Antihistamines, Acetaminophen or Ibuprofen, Ice	If other allergy symptoms please call	Yes

COVID-19 Post-Vaccine Symptoms



- ✓ Swelling
- ✓ Itching
- ✓ Redness
- ✓ Pain

NO increased risk of anaphylaxis
You CAN receive your second dose

COVID-19 Post-Vaccine Symptoms

What to Expect and When to Call

Reaction	Is this normal? What should I do?	When should I worry?	Can I get my second dose?
Mild allergic symptoms: Hives, itching, rash (except at vaccine site)	If no other symptoms, take an antihistamine (diphenhydramine, cetirizine)	If this occurs <u>within 4 hours</u> of your vaccination OR if there are other allergic symptoms, please call	If not within 4 hours of vaccination and no other symptoms, YES

COVID-19 Vaccine Reactions

What to Expect and When to Call



What is a severe allergic reaction?

Occurs within 4 hours and causes symptoms like hives, swelling, or trouble breathing and requires treatment with epinephrine or in acute care facility

Severe Allergic Reactions to Vaccines are Rare

Risk of anaphylaxis after all vaccines is **approximately 1 case per million** vaccine doses

Severe Allergic Reactions to COVID Vaccines are Rare

Risk of anaphylaxis:

Pfizer Vaccine – 5-10 cases per 1 million doses

Moderna Vaccine - 2.5 cases per 1 million doses

What is in a vaccine?

Vaccine = antigen + additional components (excipients)



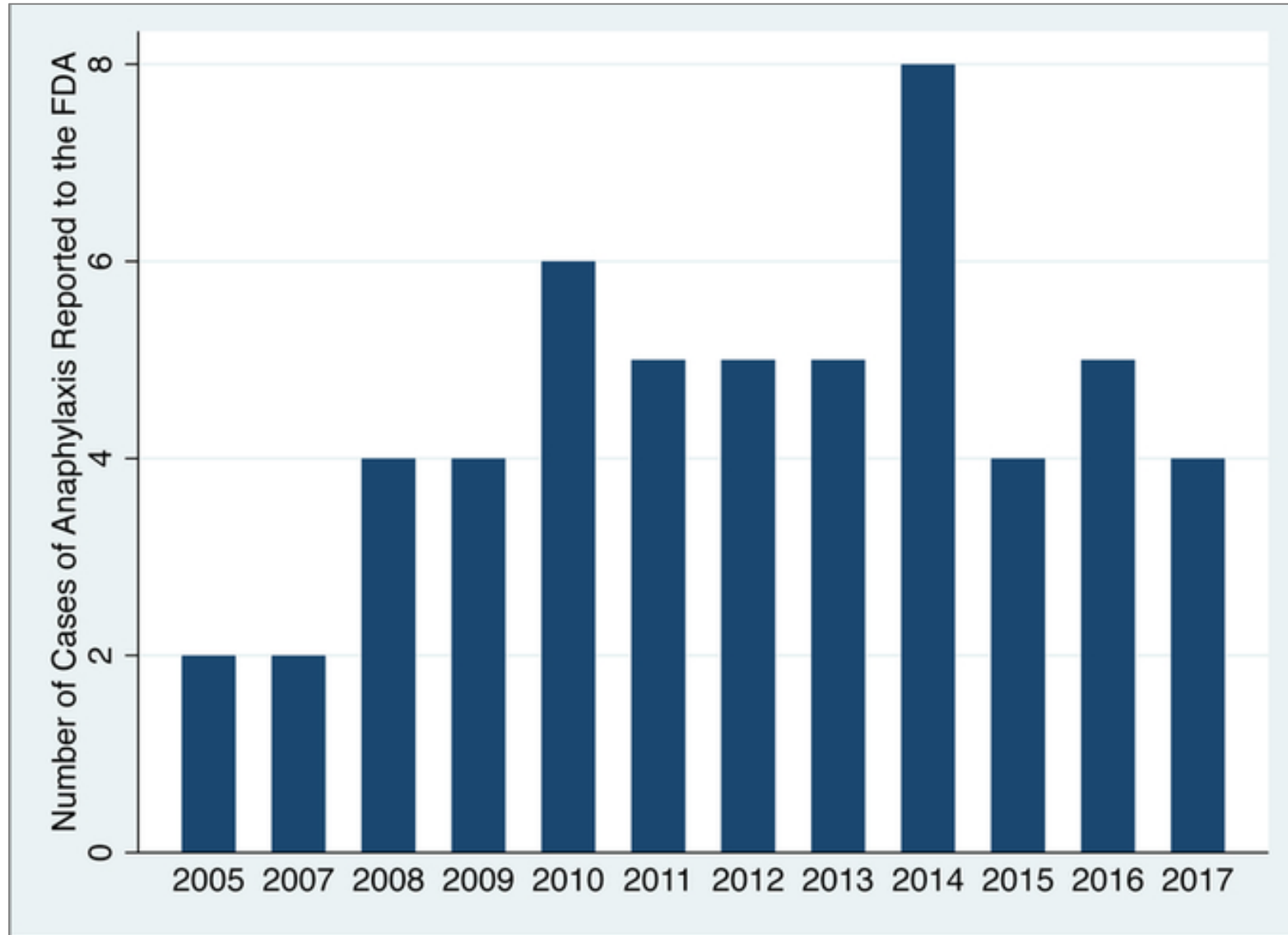
What is Polyethylene Glycol (PEG)?

Common, water-soluble ingredient in many products

- Laxative (Miralax, Golytely)
- Excipient
- Fused to protein medication to slow clearance



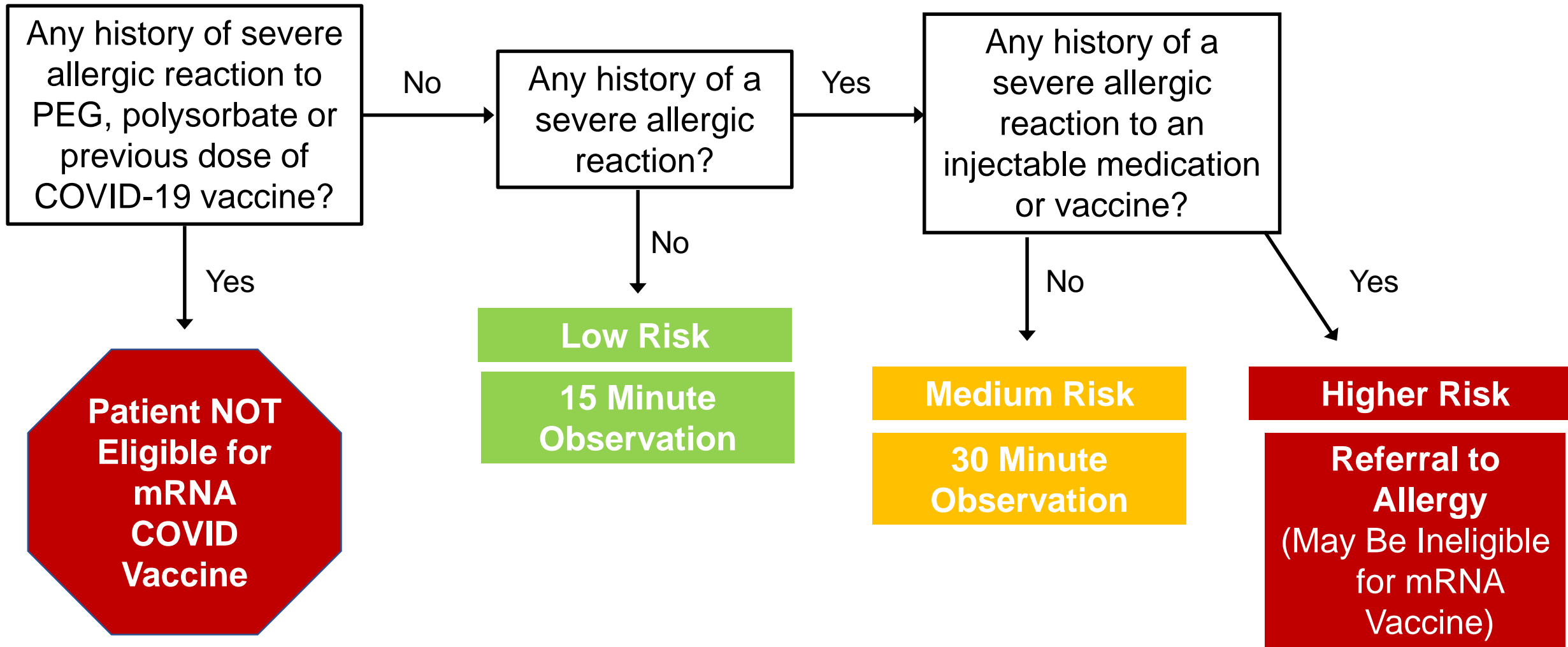
Anaphylaxis to PEG is Rare



Precautions for COVID-19 Vaccine

Recommendations:

- **History of severe allergic reaction to the COVID-19 vaccine or ingredients in vaccine is a contraindication**
- All patients should be monitored for 15 minutes
- Higher risk patients (history of anaphylaxis) monitored for 30 minutes
- All facilities should be equipped to treat anaphylaxis



Severe allergic reaction: Occurred within 4 hours and caused symptoms like hives, swelling, or trouble breathing and required treatment with epinephrine or in acute care facility

When can I get a **COVID-19** vaccine in MA?



PHASE ONE

In order of priority

- Clinical and non-clinical healthcare workers doing direct and COVID-facing care
- Long term care facilities, rest homes and assisted living facilities
- First responders (EMS, Fire, Police)
- Congregate care settings (including corrections and shelters)
- Home-based healthcare workers
- Healthcare workers doing non-COVID-facing care



PHASE TWO

In order of priority

- Individuals 75+
- Individuals 65+, Individuals with 2+ comorbidities (those that are at increased risk for severe illness)
- Early education and K-12 workers, transit, grocery, utility, food and agriculture, sanitation, public works and public health workers
- Individuals with one comorbidity



PHASE THREE

Vaccine available to general public

December - February

Estimated timeframes

February - April

April - June

Updated 1/25/2021

I received my first dose, now what?



Get your second dose

95% efficacy with 2 doses



Continue to wear a mask, wash your hands and social distance

